

## Float switch type Typ RBJ64(63)

### Application and function

The float switch can be used as water level limiter for steam generators as per TRD 401, 402 or 602.

The product corresponds to the EU 2014/68/EU module B and has the CE-mark no. 0035 of the notified body. Applied standards as per EN 13445 / EN 12952 / EN 12953 / AD 2000 or ASME-Boiler.

### Technical basic equipment

- Protection as per DIN VDE 0470: IP54
- Process connection flange DN 100 as per DIN
- Magnetic switch type M130-KG (D-07-D-16324-0) für 250Vac
- Cable gland as per DIN EN 50262: M20x1,5
- Test device

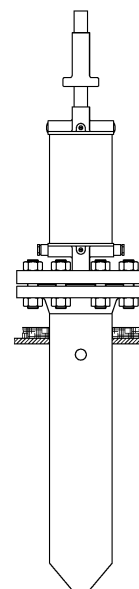
### Available (optional) versions

- Level indication (signal lamps), data sheet D-07-D-16323-0
- Magnetic switch type M130-KS (D-07-D-16324-0) for 24Vdc

### Technical data

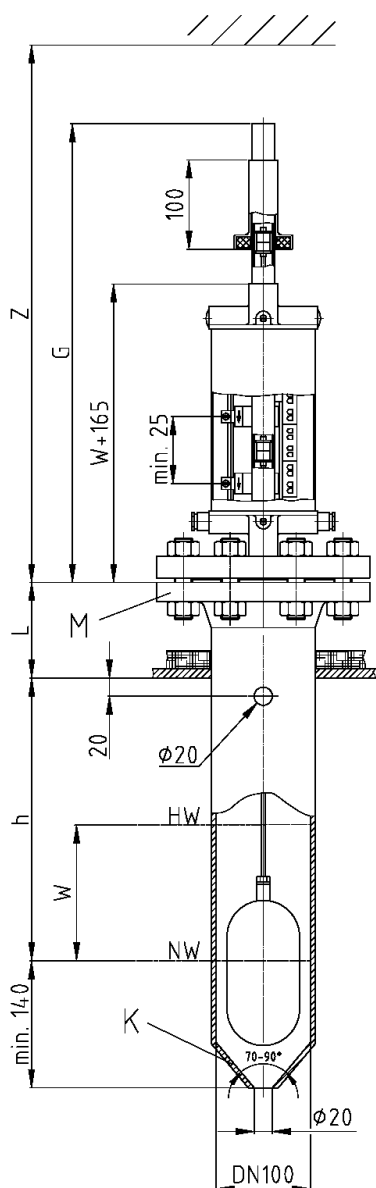
EG-component test	Cerfiticate no.: Z-D-002-10441/14				
Allowable pressure	PS [bar]	13	32	50	80
Allowable temperature	TS [° C]	195	239	265	296

Range of adjustment	W [mm]	250
---------------------	--------	-----



## Dimensions

- The component mark is only valid provided that the boiler connection corresponds to the drawing in the margin; see also leaflet D-07-D-16322-0 fig. 3
- Function test by dropping of the float device with the test magnet
- Protection tube K, flanges M, screws, nuts and gaskets are not in scope of supply, but available on request



W	G	Z
250	780	L+h+575

L+H max. 800 mm

