

Multiple probe type MS015-A

(multirod probe) with limiting probe

Application and function

The multirod probe type MS 015-A is in connection with the controller SMLC2 a self-monitoring water level limiter with safety function as per 2014/68/EC. With an additional controller (e.g. DLR1/DHR1) a 2-point water-level-control is possible.

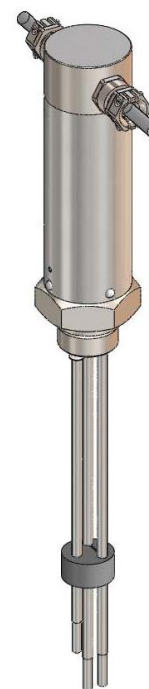
| Type | Function | EG-component test |
|---------------|---|-------------------|
| SMLC2 | Low level limiter, self checking, self-monitoring | see controller |
| DLR1/ DHR1 | 2-point water level controller | ----- |

Technical basic equipment

| | | |
|-----------------------|--|-----------------|
| Mechanical connection | G 1 (SW50) | |
| Electrical connection | Pilot wire BIHFP-0; 4 x 0,75 mm ² , 3 m length, cable ends left unprepared <ul style="list-style-type: none"> • Braide made of Cu, galvanized • Insulation and mantle made of silicon • Reinforcement / net work made of galvanized steel wire to screen and protect | |
| Material | Probe housing | stainless steel |
| | Probe rod | stainless steel |
| | Insulator | PTFE |
| | Sealing ring | Soft iron |
| | Connection housing | stainless steel |

Technical data

| | | | |
|--------------------------------|---------------|-------|-----|
| Allowable pressure | PS | [bar] | 32 |
| Allowable temperature | TS | [° C] | 239 |
| Dimension Y [mm] | 60 ≤ Y ≤ 1500 | | |
| Installation position | vertical | | |
| Protection as per DIN VDE 0470 | IP54 | | |
| Allowable temperature on plug | 100° C | | |



EC-Type-Examination
SIL 3
Production monitored



Addition

- If shut-off valves are mounted between the process connections of the add-on-housing and the boiler supports, an electric locking system (end switch) has to be installed.
- A drain valve is to be mounted to the add-on-housing.
- Use in mounting supports if the boiler support corresponds to the representations according to Data Sheet D-08-D-16351-0. Protective tube K, flange, screws, nuts and seals can also be supplied.
- For electrode support flange see Data Sheet D-08-D-22510-0

