

Lighting device

LED Secure Ex SOL / LED Secure Ex SOL Plus

Application and function

The lighting device is connected to green/red, black/white and transparent indicators to realise the backlighting.

The backlighting of the steam and water compartment makes it easier to recognise the water level due to the higher contrast.

Several LED modules are arranged on top of each other for long display lengths.

Technical basic equipment

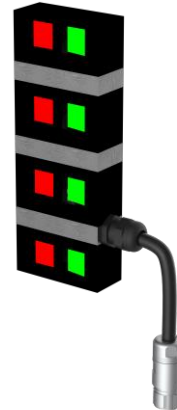
- Intrinsically safe lighting module
- Cable gland on luminaires by Lapp, SKINTOP MS-M ATEX
- Protection class IP65
- Power supply via flameproof encapsulated power supply unit
- 16-pole supply cable with 8 intrinsically safe circuits for each module
- 5 different versions:
 - Green-Red-Version
 - with 3 LED lines
 - with 4 LED lines
 - White Version
 - with 4 LEDs
 - with 6 LEDs
 - with 8 LEDs
- Ex labelling:

Lighting module:

⊕ II 2G Ex ib IIC T4 Gb

Power supply unit:

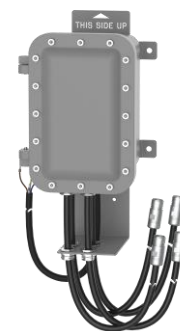
⊕ II 2G Ex d [ib IIC] IIB+H2 T4 Gb



LED Secure EX GR SOL 8

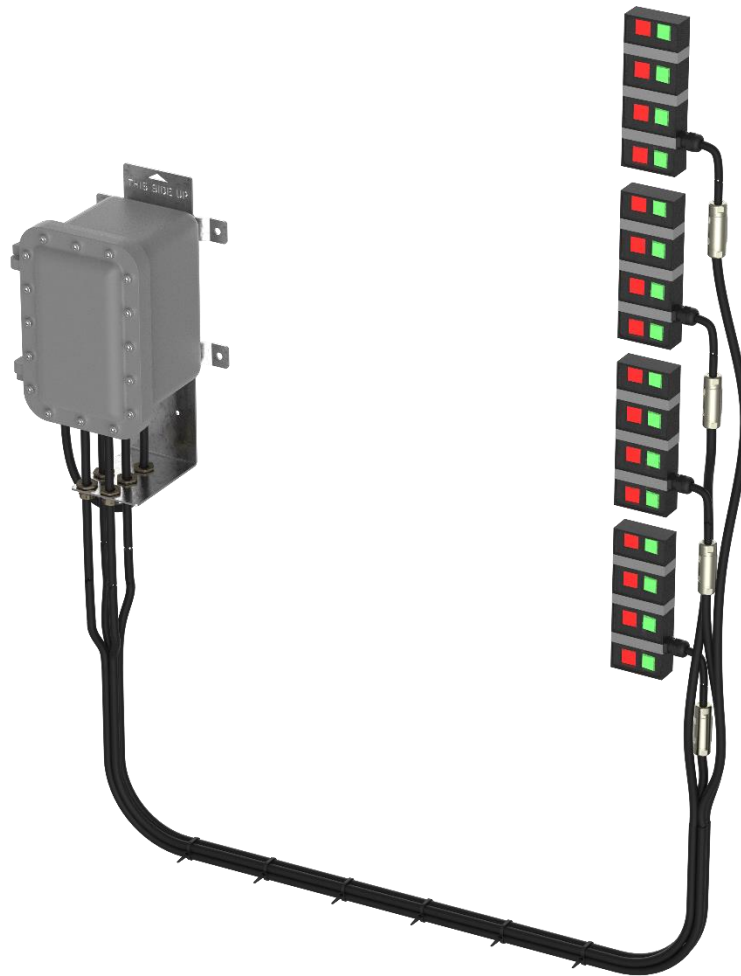


LED Secure EX W SOL 4



Power supply unit,
pressure-resistant

Structure overview



Ex.: with 4Pcs. LED Secure EX GR SOL 8

The power supply unit is equipped with connecting cables with a minimum length of three metres and a maximum length of 15 metres to which the plugs are attached. There is an approx. 30cm long cable on the lights to enable connection of the connection socket.

Technical data

	LEDSecureEx SOL 6 / 8 LED Secure Ex SOL Plus 6 / 8	LEDSecureEx W SOL 4 / 6 / 8			
Explosion protection	EN 60079-0:2012+A11:2013 EN 60079-11:2012				
Electromagnetic compatibility	EN 61326-1				
LED module output	6 LEDs	8 LEDs	4 LEDs	6LEDs	8LEDs
	3,75 W	5 W	2,5W	3,75W	5W
Operating voltage	< 10 Vdc				
Housing material	AlMgSi 0,5				
Glass cover	Borosilicate glass		Polycarbonate		
Ambient temperature	$-40^{\circ}\text{C} < T_{\text{amb}} < 70^{\circ}\text{C}$				

	Power supply unit
Explosion protection	EN 60079-0:2012+A11:2013 EN 60079-1:2007 EN 60079-11:2012
Electromagnetic compatibility	EN 61326-1
Low voltage	EN 60730-1
Nominal input voltage	100 - 240 VAC
max. input voltage range	90 - 265 VAC
Power frequency	50 - 60 Hz
Input power @ 115 VAC	0.8 A
Input power @ 230 VAC:	0.4 A
Power factor @ 115VAC	> 0.94
Power factor @ 230VAC:	> 0.90

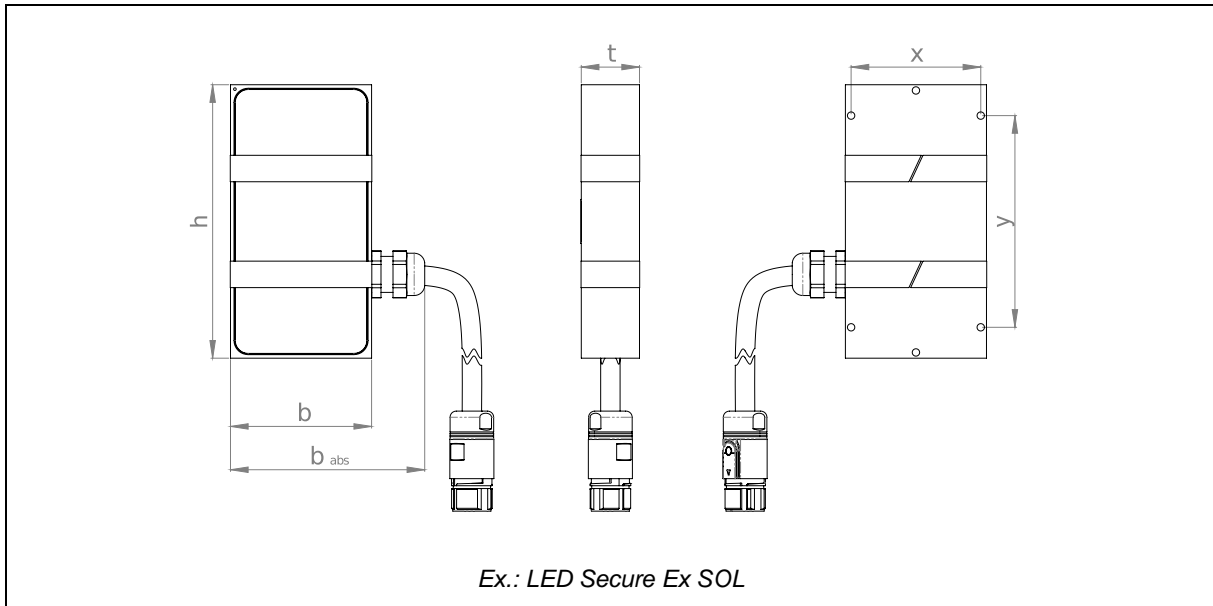
Nominal output voltage	2 - 4 VDC
Open-circuit output voltage (max.)	8,7 VDC
Maximum number of LED lighting modules	4
Maximum number of LEDs that can be used	32
Rated output current per LED	150 mA
Maximum output current per circuit	335 mA
Maximum output power per circuit	1,3 W

Isolation voltage I/O-O/P	3750 VAC
Isolation voltage I/O-FG	2000 VAC
Isolation voltage O/O-FG	500 VAC
Insulation resistance (@500 VDC, 25°C, 70% RH)	10 ⁸ Ohm

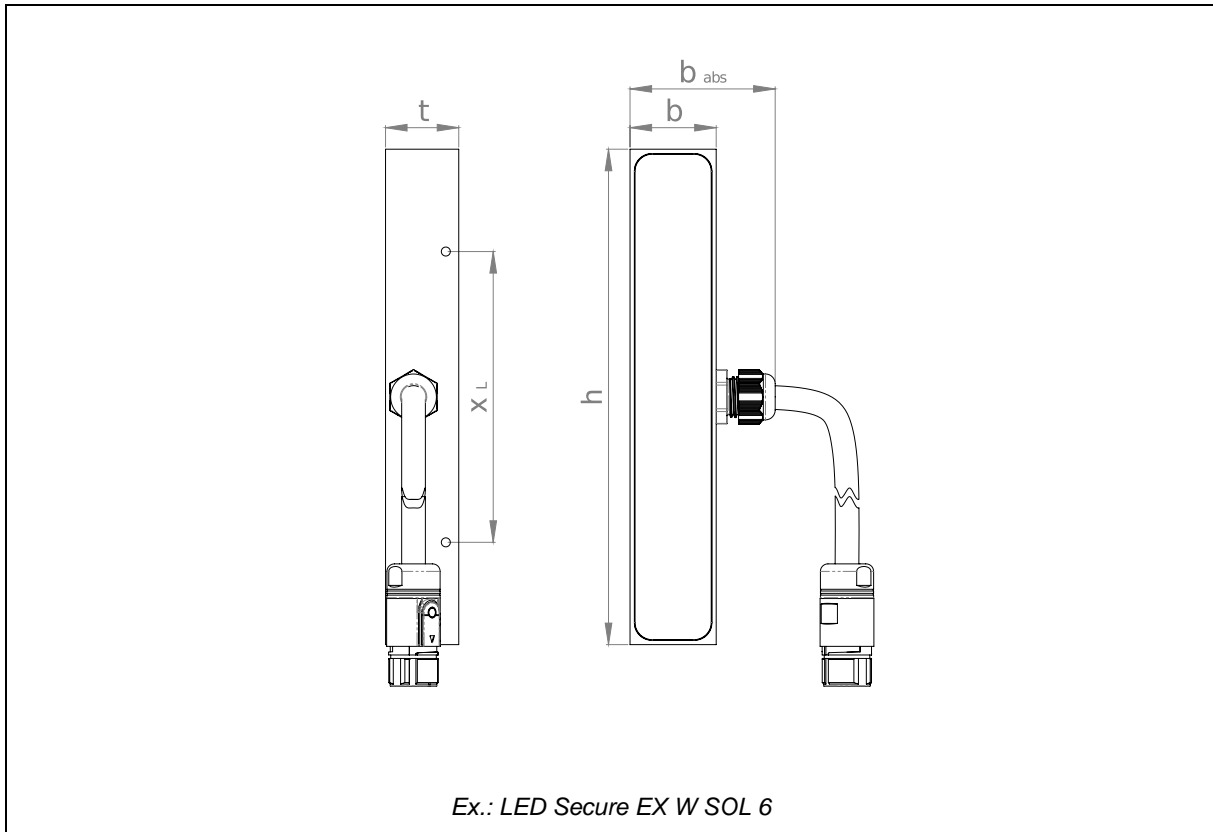
Ambient temperature	-40°C < T _{amb} < 40°C
Overtemperature protection	Switch-off; mains reset necessary
Ambient air humidity	20 - 90% rF non-condensing
Weight	16 kg

Connections	1	2	3	4
Article-No.	15-15853	15-15854	15-15852	15-15855

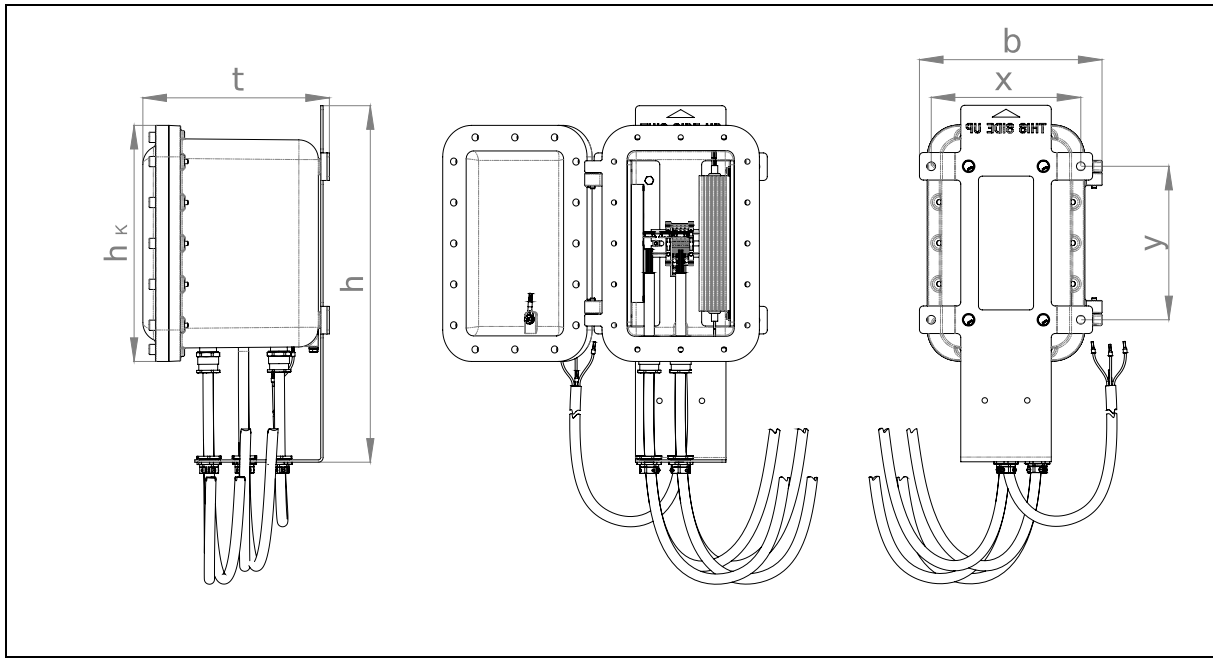
Dimensions and sizes



		LED Secure Ex SOL				LED Secure Ex SOL Plus			
		Size 6		Size 8		Size 6		Size 8	
		[mm]	[inch]	[mm]	[inch]	[mm]	[inch]	[mm]	[inch]
Height	[h]	155	6 1/9	215	8 1/2	187	7 1/3	263	10 1/3
Width	[b]	80	3 1/7	80	3 1/7	80	3 1/7	80	3 1/7
Absolute width	[b_{abs}]	110	4 1/3	110	4 1/3	110	4 1/3	110	4 1/3
Depth	[t]	33	1 2/7	33	1 2/7	33	1 2/7	33	1 2/7
Hole spacing	[x]	73,5	2 8/9	73,5	2 8/9	73,5	2 8/9	73,5	2 8/9
	[y]	120	4 5/7	180	7	152	6	229	9



		4LED Version		6LED Version		8LED Version	
		[mm]	[inch]	[mm]	[inch]	[mm]	[inch]
Height	[h]	230	9	300	11 ⁴ / ₅	370	14 ⁴ / ₇
Width	[b]	40	1 ⁴ / ₇	40	1 ⁴ / ₇	40	1 ⁴ / ₇
Absolute width	[b_{abs}]	67	2 ² / ₃	67	2 ² / ₃	67	2 ² / ₃
Depth	[t]	34	1 ¹ / ₃	34	1 ¹ / ₃	34	1 ¹ / ₃
Hole spacing	[x_L]	135	5 ¹ / ₃	238	9 ³ / ₈	308	12 ¹ / ₈



		[mm]	[inch]
Height	[h]	453	17 ⁵ / ₆
Box height	[h _k]	300	11 ⁴ / ₅
Width	[b]	232	9 ¹ / ₇
Depth	[t]	237,5	9 ¹ / ₃
Hole dimensions	[x]	190	7 ¹ / ₂
	[y]	195	7 ² / ₃
Opening angle		203,5°	



Direct download



Product page on the Internet

Igema GmbH

Antwerpener Str. 1
48163 Muenster
Germany

www.igema.com

Telephone: +49 25 01 924 24 0
Telefax: +49 25 01 924 24 99
info@igema.com

