



Blow down valve

KAV1 R1-N, KAV2 R1-N

Application and function

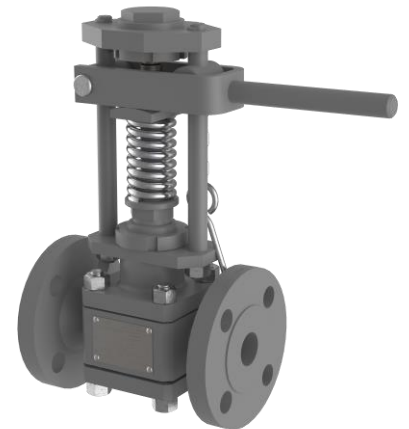
Blowdown valves are used for blowing down and / or draining steam boilers. The design of the valve enables the rapid opening required for blowdown. This rapid opening creates a suction in the boiler, which flushes sludge and any solids out of the boiler.

Technical basic equipment

- KAV1 R1-N - with hand lever; later conversion to diaphragm actuator is possible
- KAV2 R1-N with membrane drive for
- automatic desludging in conjunction with the programme-controlled IGEMA solenoid valve type PGM
- Designed as a globe valve with flange connection up to max. DN 50 to DIN EN1092-1 or weld-on end up to max. DN 50 to DIN EN 12627
- Quick-closing mechanism for fast closing and opening
- Sealing package made of PTFE roof sleeve seal
- Screwed-in valve seat
- Manual locking of the valve in open position possible
- All pressurised parts made of heat-resistant steel
- Spindle, seat and cone made of stainless steel

Optional versions

- Customised process connections according to DIN or ANSI



KAV1-R1-N

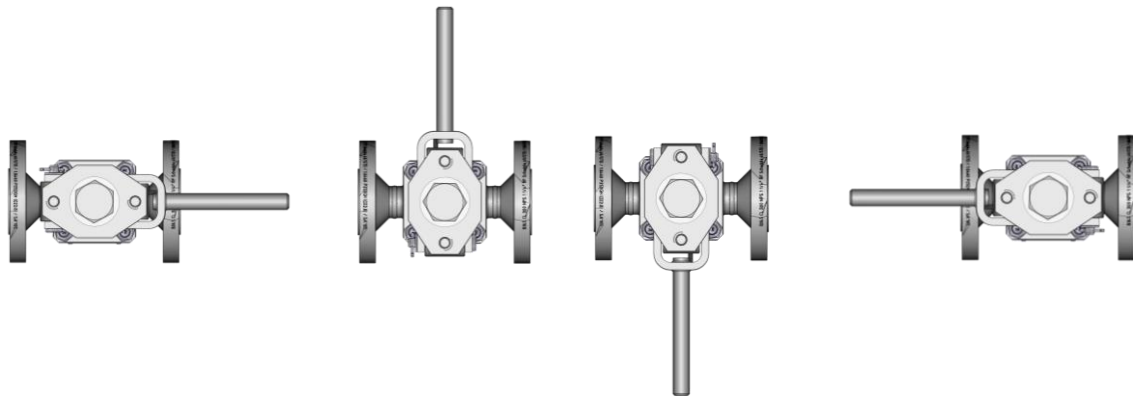


KAV2-R1-N

Available dimensions

	PS		Pressure stage DN	Outer diameter		Installation dimension L [mm]	
	[bar]	[psig]		[mm]	[inch]	[mm]	[inch]
Welding neck flange to DIN EN1092-1 with sealing surface B1	32	464	DN 20		160	6 ² / ₇	
			DN 25		160	6 ² / ₇	
			DN 32		180	7	
			DN 40		200	7 ⁷ / ₈	
	50	725	DN 25		190	7 ¹ / ₂	
			DN 40		220	8 ² / ₃	
Welding end according to DIN EN 12627	32	464	DN 20	22	⁶ / ₇	160	6 ² / ₇
			DN 25	28,5	1 ¹ / ₈	160	6 ² / ₇
			DN 40	43	1 ² / ₃	210	8 ¹ / ₄
			DN 50	54,5	2 ¹ / ₇	250	9 ⁵ / ₆
	50	725	DN 25	28,5	1 ¹ / ₈	160	6 ² / ₇
			DN 40	42	1 ² / ₃	210	8 ¹ / ₄

Possible hand lever positions




Flow direction



TIPP

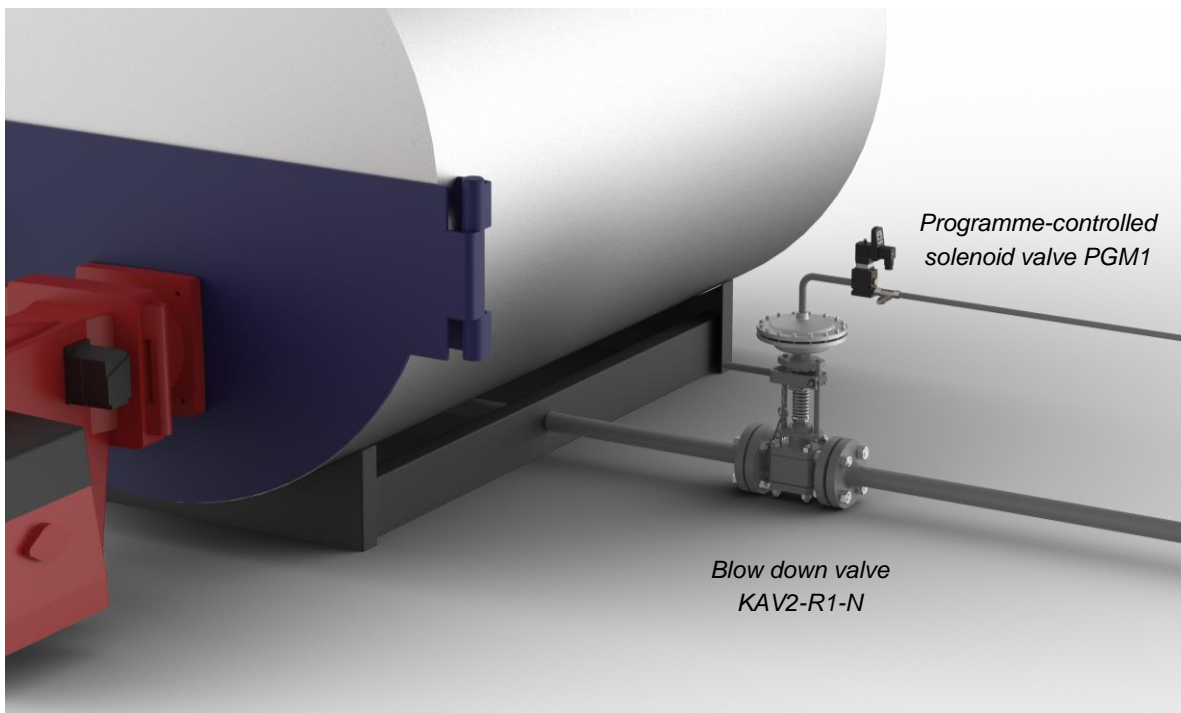
The hand lever is pre-assembled against the direction of flow as standard. Other hand lever positions must be specified when placing the order.

Accessories

<p>Programme-controlled solenoid valve PGM1</p>	
<p>A programme-controlled solenoid valve is inserted into the control line to actuate the diaphragm of the KAV2-R1-N valve and subsequently open the valve. This can be programmed for a cycle in order to control regular blowdown of the boiler.</p>	

Type	Data sheet	Article-No.
Programme-controlled solenoid valve PGM1	D-09-D-55325-EN	15-00268

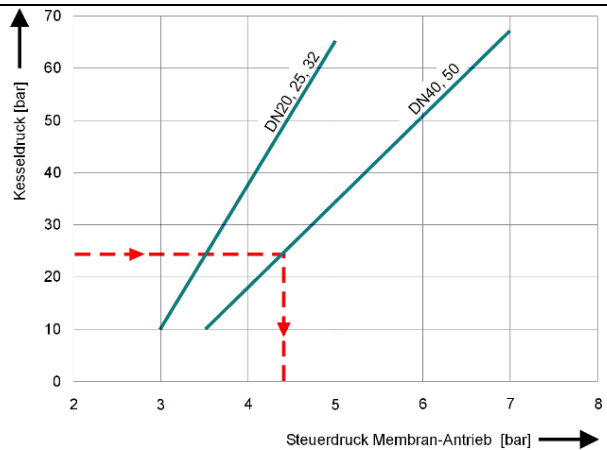
Installation example



Control pressure required for actuation via the diaphragm

Depending on the nominal diameter of the valve connection and the applied boiler pressure, different control pressures result for the membrane actuator. The determined control pressure may be exceeded by a maximum of 10% and must not exceed 7 bar.

The filling volume per blowdown process is 0.55 litres.



Reading example:

y-axis → Boiler pressure [bar] → 25

Function straight line DN40, 50

Result: Control pressure 4,3 [bar]

Spare parts

Pos.	Description	Article-No.	Quantity
1	Pneumatic actuator	15-00264	1
2	Membrane	40-00139	1

Spare parts for the programme-controlled solenoid valve can be found in the corresponding data sheet.





Direct download



Product page on the Internet

Igema GmbH

Antwerpener Str. 1
48163 Muenster
Germany

www.igema.com

Telephone: +49 2501 924 24 0
Telefax: +49 2501 924 24 99
info@igema.com

