



# Double-drain valve

AV56x, AV57x

## Application and function

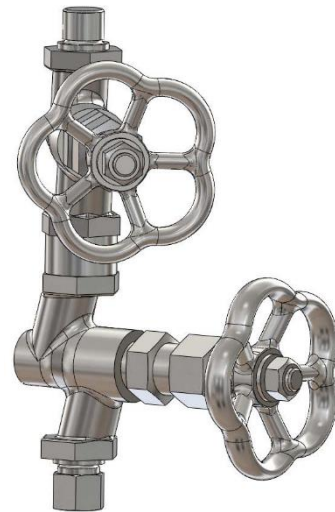
The drain valve is used to drain instruments or to drain fillings of instruments. The area of application comprises with the entire product range of level gauges and float switches.

## Technical basic equipment

- Inlet: depending on type (see table)
- Outlet: depending on type (see table)
- Outlet: Cutting ring screw connection  $\varnothing$  12 mm according to DIN 2353-DS12
- Body material carbon steel as per DIN or ASME
- Inner parts of valve: stainless steel
- Handwheel carbon steel (up to PS = 32 bar) resp. aluminium up to PS = 200 bar

## Available (optional) versions

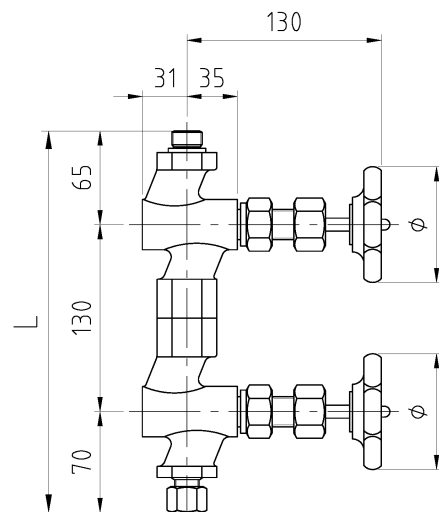
- Customer-specific input and output connections



## Technical data

		AV56x		AV57x				
Allowable pressure	PS [bar]	20	32	50	80	100	160	200
Allowable temperature	TS [°C]	215	239	265	296	312	348	367
Handwheel	$\varnothing$ [mm]	80		110				

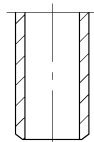
Type	Inlet	Outlet	L = [mm]
AV560	G 1/2"	Cutting ring connection	approx. 250-265
AV561	Welding end	Welding end	
AV570	G 1/2"	Cutting ring connection	
AV571	G 1/2"	Welding end	
AV573	Flange	Socket welding	
AV576	G 1/2"	Socket welding 1" class 3000	



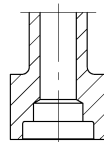
## Digital Documentation



### Ausgangsseite

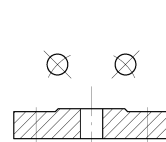


Anschweißende DIN 3239  
Butt welding end ASME B16.25

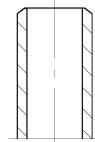


Socket welding  
SW ASME B16.11

### Eingangsseite



Flansch DIN oder ASME B16.5  
Flange DIN or ASME B16.5



Anschweißende DIN 3239  
Butt welding end ASME B16.25