



# Shut-off Valve

## Double Shut-off Type: A210, A220, A230, A240

### Application & Function

Shut-off valves are used to shut off the indicator safely to the Vessel/Steam Boiler.

Shut-off valves are suitable for the whole product range of Reflex-, Transparent - and Bi-Colour Gauges up to PS 200 bar.

Double Shut-off valve are actuated with quick closing spindle with hand lever and normal Spindle with Hand wheel.

The Valve is equipped with self-closing ball for automatic shut off.

### Technical Basic Equipment

- Valve housing made of carbon steel, material according to DIN and ASME
- Inner valve parts are always made of stainless steel
- With self-closing ball – Safety function
- With back seal to relieve the easing gland packing
- Hand Lever (Aluminium) with quick closing spindle (1/3 rotation)
- Hand Wheel (Stahl) with normal spindle
- Listed process connection according to DIN or ASME.

### Available (optional) version

- Optionally different process connections
- Stainless steel valve body
- Handle bar for rope remote control

### Technical Data

		A210	A220	A230	A240
Allowable pressure	PS [bar]	120	120	200	200
	PS [psi]	1741	1741	5323	5323
Allowable temperature	TS [°C]	326	326	367	367
	TS [°F]	619	619	693	693

A210



A220



A230



A240



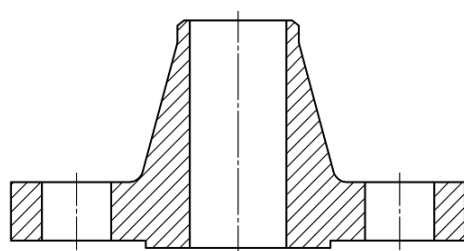
Available process connections \*

	Shut Off Valve	Type	DN	PN	Article number	Wall Thickness acc. DIN EN 10253-2	Dimension	L (mm)
DIN	A210	Flange EN 1092-1	20	40	15-14182	-	-	170
	A210	Flange EN 1092-1	25	100	15-14309	-	-	155
	A210	Flange EN 1092-1	25	250	15-14313	-	-	165
	A220	Flange EN 1092-1	25	100	15-04351	-	-	159
	A220	Flange EN 1092-1	25	160	15-13717	-	-	159
	A230	Flange EN 1092-1	25	250	15-00434	-	-	155
	A240	Flange EN 1092-1	25	250	15-06733	-	-	155
	A210	Butt Welding DIN EN 10253-2	-	-	15-10964	EN-Series 2	Ø33,7x2,6	160
	A210	Butt Welding DIN EN 10253-2	-	-	15-03402	EN- Series 3	Ø33,7x3,2	160
	A220	Butt Welding DIN EN 10253-2	-	-	15-03696	EN- Series 3	Ø33,7x3,2	160
	A220	Butt Welding DIN EN 10253-2	-	-	15-10294	EN- Series 4	Ø33,7x4	160
	A230	Butt Welding DIN EN 10253-2	-	-	15-12959	EN- Series 7	Ø33,7x6,3	150
	A240	Butt Welding DIN EN 10253-2	-	-	15-12836	EN- Series 6	Ø33,7x5,6	150

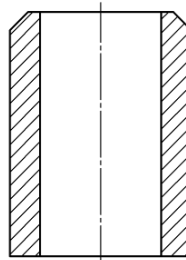
	Shut Off Valve	Type	NPS	Class	Article number	Schedule acc. ASME B36.10	Dimension	L (mm)
ASME	A210	Flange B16.5	3/4"	300	15-14309	-	-	154
	A210	Flange B16.5	1"	300	15-06509	-	-	155
	A220	Flange B16.5	3/4"	300	15-01265	-	-	185
	A220	Flange B16.5	1"	600	15-04015	-	-	160
	A230	Flange B16.5	1"	1500	15-01897	-	-	162
	A240	Flange B16.5	1"	1500	15-01897	-	-	162
	A240	Flange B16.5	1"	1500	15-01897	-	-	162
	A240	Flange B16.5	2"	6000	15-01897	-	-	162
	A210	Butt Welding B16.25	1"	3000	15-04119	-	-	167
	A240	Butt Welding B16.25	1"	3000	15-14045	-	-	157
	A240	Butt Welding B16.25	2"	6000	15-13381	-	-	162

\* Specific Process connections on request

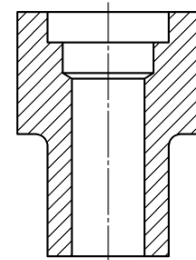
Process Connections



Flange DIN EN 1092-1  
Flange ASME B16.5

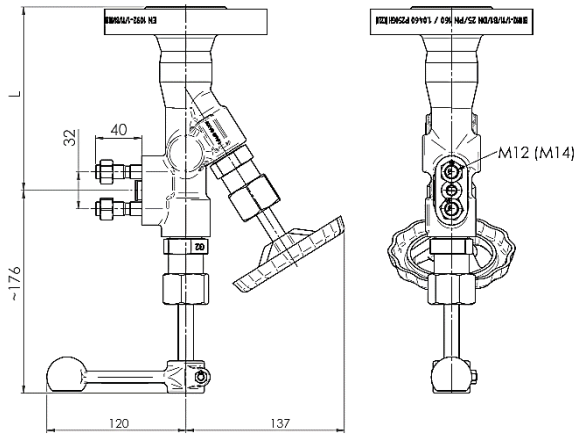


Butt welding DIN 3239  
Butt welding ASME 16.25

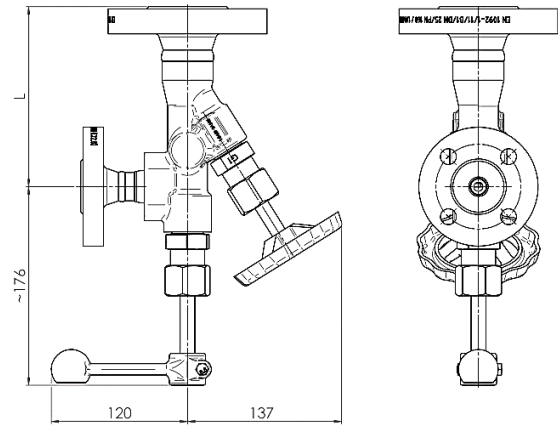


Socket welding DIN EN 10241  
Socket welding ASME B16.11

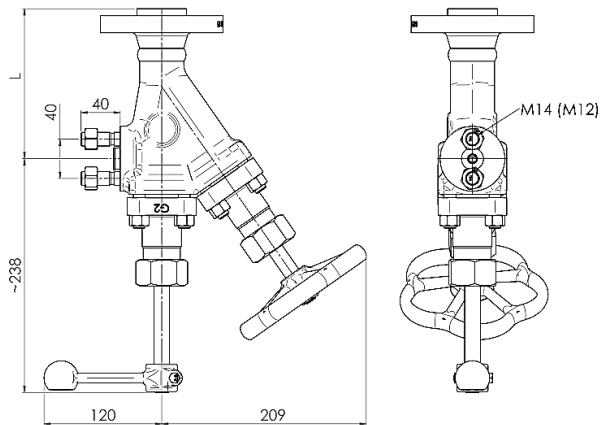
Double Shut-off - Valve - A210



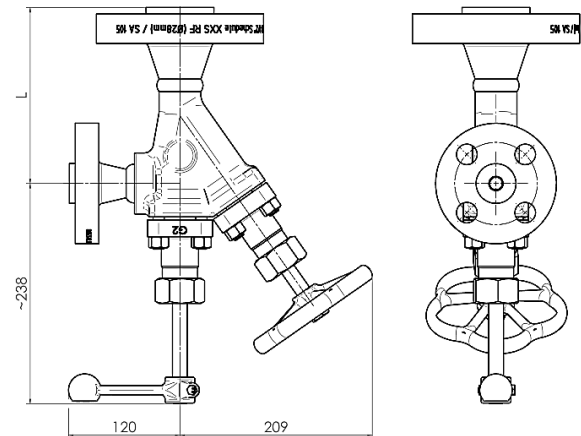
Double Shut-off - Valve - A220



Double Shut-off - Valve - A230



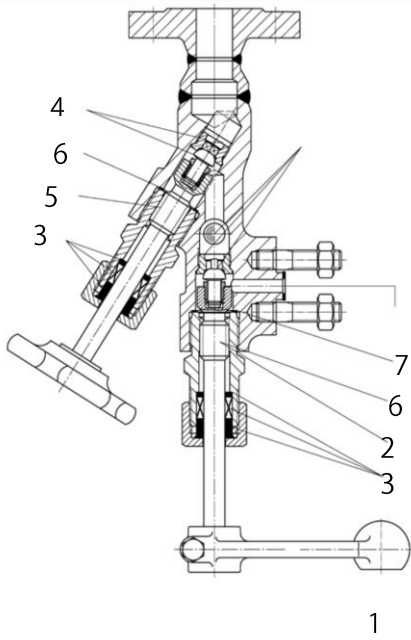
Double Shut-off - Valve - A240



Dimension „L“ is listed on the table on page 2.

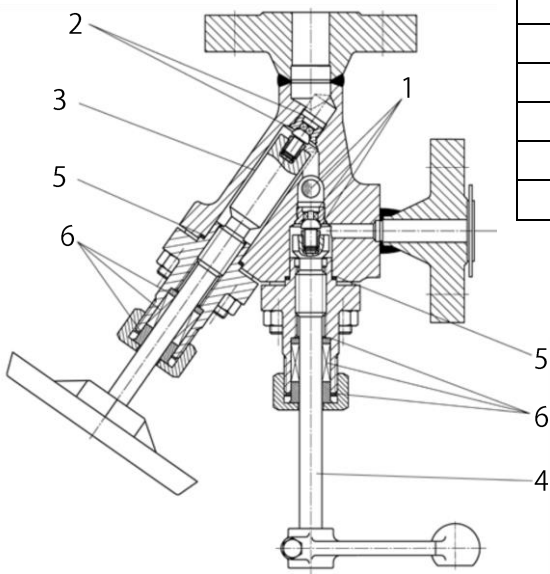
Spare Part List

Spare Parts for Shut-off - Valve  
A210 and A220



Pos-Nr.	Nomination	Article-No.	Quantity
1	Seat Trim, Plug and Ball	15-00115	1
2	Quick Closing Spindle	25-00126	1
3	Packing	15-00113	2
4	Seat Trim and Plug	15-00114	1
5	Spindle	25-00652	1
6	Seal Ring	40-00117	2
7	Seal Ring	40-00109	1

Spare Parts for Shut-off - Valve  
A230 and A240



Pos-Nr.	Nomination	Article-No.	Quantity
1	Seat Trim, Plug and Ball	15-00115	1
2	Seat Trim and Plug	15-00114	1
3	Spindle	25-00653	1
4	Seat Trim and Plug	25-00654	1
5	Seal Ring	40-00119	2
6	Packing	15-00112	2