

3-Rod Level Probe

DP313

Application and function

In conjunction with the DCU discontinuous water level controller, the 3-rod level probe forms a 2-point water level control system with LW or HW signalling.

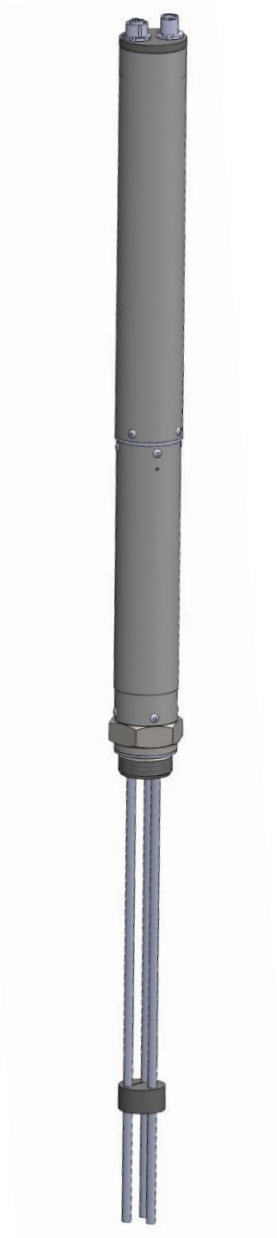
This product is in accordance to EU-directive 2014/68/EU. Applied policy acc. to DIN EN 13445 and ASME Boiler and Pressure Vessel Code. Considered regulations AD2000.

Basic technical equipment

Mechanical connection	G 1"	
Power connection	CAN-Bus according to DIN ISO 11898 Plug-in connector	
Material	Electrode housing	stainless steel
	Electrode rod	stainless steel
	Electrode extension	stainless steel
	Insulator	stainless steel
	Plug / socket	PA66, zinc diecasting

Electrical data

Responsiveness: >0,5µS/cm at 25°C
 Power supply: 24V
 Power consumption: 0,6W
 Data exchange: CAN-Bus in accordance with DIN ISO 11898, CANopen-protocol
 Electrical connection: CAN-Bus in accordance with DIN ISO 11898
 Protection class: IP65 as per DIN EN 60529
 Allowable ambient temperature: 0°C bis 85°C
 Self-test: every 3sec



Technical data

Allowable pressure	PS [bar]	32
Allowable temperature	TS [°C]	239
Plug / socket	M12; 5-pole; A-coded	
Protection class in accordance with DIN VDE 0470	IP65	
Installation position	vertical	
Allowable temperature at the plug	85°C	

The rods are to be shortened to the correct length for their function.
Attention to be paid to their allocation:

Rod 1: min level
Rod 2: max. level
Rod 3: signalling

Mounting housing

- Use in mounting housing if shut-off valves are fitted between process connection and boiler supports. A relief valve is likewise required
- Use in mounting supports if the boiler support corresponds to the representations according to data sheet.
Protective tube K, flange, screws, nuts and seals can also be supplied.
- For electrode support flange see data sheet.

Digital Documentation

