

# Multiple probe

## MS015-A (multirod probe) with limiting probe

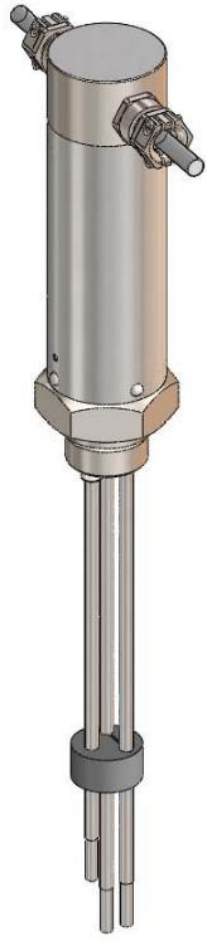
### Application and function

The multirod probe type MS 015-A is in connection with the controller SIL (SMLC2) a self-monitoring water level limiter with safety function as per PED 2014/68/EU. With an additional controller (DLR1/DHR1) a 2-point water-level-control is possible.

Type	Function	EC-type examination
SMLC2	Low level limiter, self-checking, self-monitoring	see controller
DLR1	2-point fluid level regulation	-----
DHR1		

### Technical basic equipment

Mechanical connection	G 1" (SW50)		
Electrical connection	Pilot wire BiHFP-0; 4 x 0,75 mm <sup>2</sup> , 3 m length, cable ends left unprepared		
	<ul style="list-style-type: none"> <li>Braide made of Cu, galvanized</li> <li>Insulation and mantle made of silicon</li> <li>Reinforcement / network made of galvanized steel wire to screen and protect</li> </ul>		
	Material	Probe housing	stainless steel
		Probe rod	stainless steel
	Probe extension	stainless steel	
	Insulator	PTFE	
	Socket	Polyamide	
	Sealing ring	Soft iron	



### Technical data

Allowable pressure	PS [bar]	32
Allowable temperature	TS [°C]	239
Cable gland		M16x1,5
Protection as per DIN VDE 0470		IP65
Allowable temperature on plug		100°C

EC-type examination  
SIL 3 (LMC2)  
Production monitored

Edition 01/2021  
Subject to change without a note.

### Additional

- If shut-off valves are mounted between the process connections of the add-on-housing and the boiler supports, an electric locking system (end switch) has to be installed.
- A drain valve is to be mounted to the water column.
- Use in mounting supports if the boiler support corresponds to the representations according to data sheet. Protective tube K, flange, screws, nuts and seals can also be supplied.
- For electrode support flange see separately data sheet

### Digital Documentation

