



Float switch

Type RBA26 / RBA36

Application and function

The float switch is versatile and can be used both as a multipoint level controller and for level limitation in various container systems. It precisely monitors the liquid level and thus contributes to safety and optimum operating efficiency.

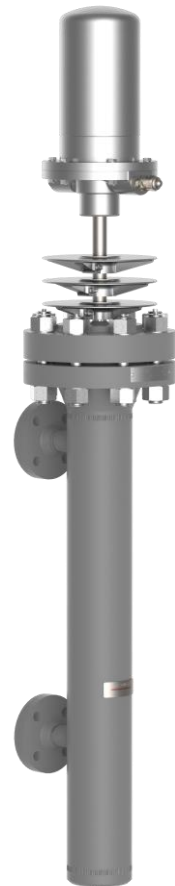
The product was designed in accordance with standards EN 12952-11 and EN 12953-9 as well as the ASME Boiler and Pressure Vessel Code. It was also designed in accordance with the AD2000 regulations to ensure high safety standards and compatibility in pressurised vessel applications.

Technical basic equipment

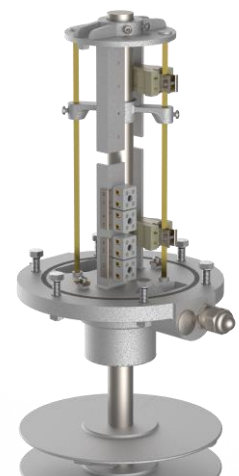
- EC type-examination certificate with certificate no:
Z-002-12683/19 (PN160)
Z-002-13663/20 (PN250)
- Materials according to DIN or ASME
- Designed according to DIN VDE 0470: IP65
- Process connection: Flanges according to DIN or ANSI
- Magnetic lockout switch type M130-KG
- Cable gland according to DIN EN 50262: M20x1.5
- Drain plug G 1/2"

Optional versions

- Customised process connections
- Level indicator (signal lamps)
- Ventilation plug
- Customized drain valve



RBA 26/36



Switch housing with 2 switches

Technical data

Operating limits	perm. pressure [PS]	perm. temperature [TS]
PN160	100 bar 1450 psig	311 °C 591 °F
PN250	120 bar 1740 psig	325 °C 617 °F

Dimensions and sizes

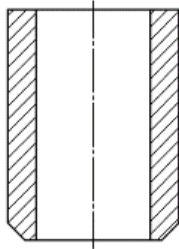
Pressure range [PS]	100		120	
	[mm]	[inch]	[mm]	[inch]
Connection dimension [A1]	155	6.1	175	6.9

The component label is only valid if shut-off valves are fitted between the process connection and the boiler connection.

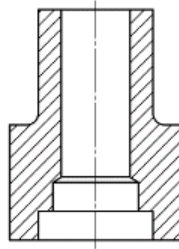
Available dimensions

RBA 26		
Switch adjustment range W	[mm] / [inch]	100 to 150 / 3.9 to 5.9
RBA 36		
Switch adjustment range W	[mm] / [inch]	150 to 750 / 5.9 to 29.5

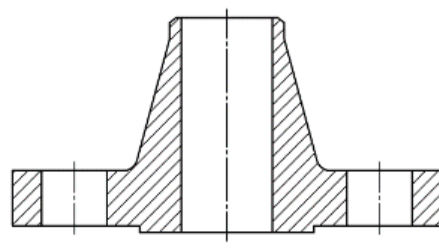
Process connection options



Welding end



Socket welding



Flange

All connection variants are available according to DIN or ASME standard

Basic equipment

The float switch is supplied with a G 1/2" drain plug and a switch housing in accordance with protection class DIN VDE 0470: IP54 with built-in magnetic lock switch M130-KG. Customised equipment is possible.



Drain plug G 1/2"



Magnetic locking switch M130-KG

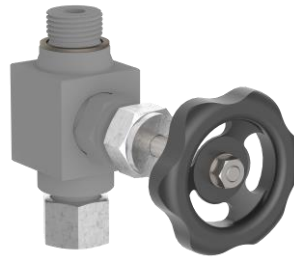
Optional versions

Examples of the optional design

Customised drain valve



Ex.: AV520

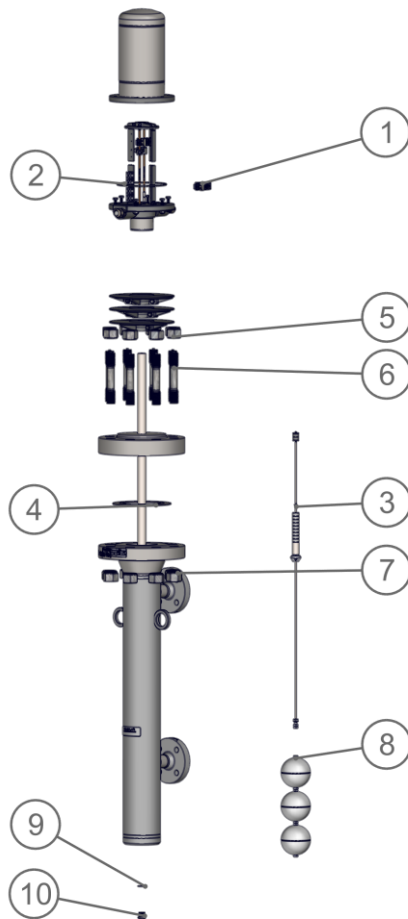


Ex.: AV250

Type	Data sheet	Article-No.
Drain valve AV520 Prozessanschluss G 1/2" Cutting ring screw connection DS12	D-09-D-50514-EN	40-01845

Spare parts

Pos.	Description	Size	Article-No.	Quantity
1	Magnetic locking switch M130-KG	-	15-01122	-
2	O-ring	-	40-00301	1
3	Float device	-	15-13746	1
4	Grooved metal gasket	80-100bar	DN100 (DIN 2697)	1
		160bar		
4,5,6,7	Connection set for flange	100bar	15-03526	(1)
		160bar	15-06311	
8	Floater	100 bar	3 Kugeln	15-14511
			4 Kugeln	15-14514
			5 Kugeln	15-14515
		120 bar	6 Kugeln	15-14516
			7 Kugeln	15-14517
			8 Kugeln	15-14518
			9 Kugeln	15-14519
			10 Kugeln	15-14520
9	Sealing ring	Ø26 x 21 x 1,5mm	40-00099	1
10	Drain plug	G 1/2"	40-10481	1





Direct download



Product page on the Internet

Igema GmbH

Antwerpener Str. 1
48163 Muenster
Germany

www.igema.com

Telephone: +49 25 01 924 24 0
Telefax: +49 25 01 924 24 99
info@igema.com

