

# Float switch

## Type RBA34

### Application and function

The float switch can be used as water level controller or limiter for steam generators.

The product corresponds to the EU 2014/68/EU and has the CE-mark no. 0035 of the notified body. Applied standards as per EN 12952 / EN 12953 and ASME Boiler and Pressure Vessel Code. Considered regulations AD2000.

### Technical basic equipment

- Material according to DIN or ASME
- Protection as per DIN VDE 0470: IP54
- Process connection: flanges as per DIN or ANSI
- Magnetic switch type M130-KG
- Cable gland according to DIN EN 50262: M20x1,5
- Drain plug G 1/2"

### Available (optional) versions

- Protection as per DIN VDE 0470: IP65
- Process connection: welding end, Socket Welding
- Level indication (signal lamps)
- Ventilation screw
- Drain valve AV 250 (other drain valves on request)

### Technical data

EG-component test	Certificate Nr.: Z-D-002-10441/14				
Allowable pressure	PS	[bar]	32	50	80
Allowable temperature	TS	[°C]	239	265	296
Drain valve	Type	AV250			

Range of adjustment	W [mm]	250	350	450	550	650	750
---------------------	--------	-----	-----	-----	-----	-----	-----

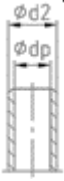
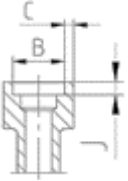


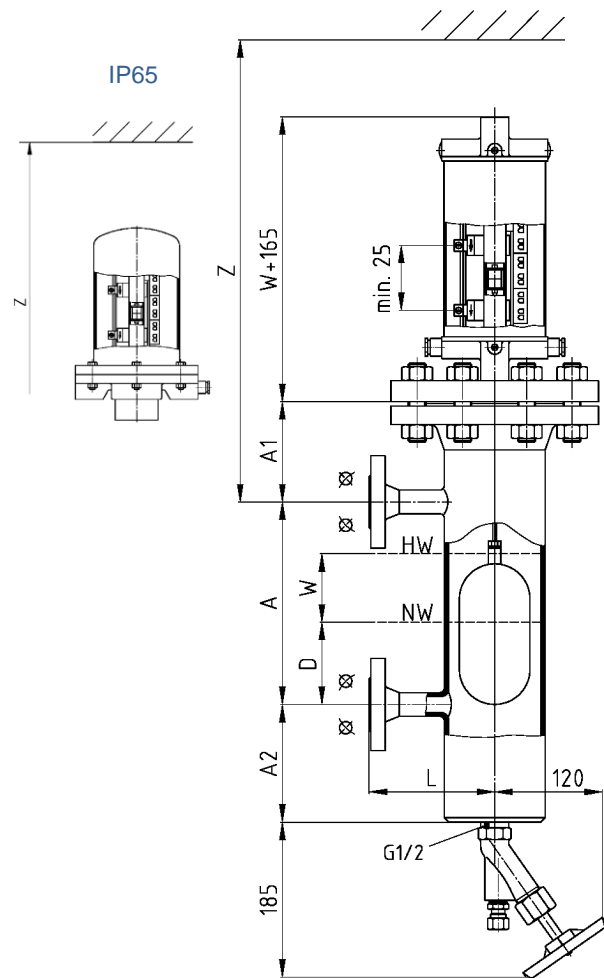
## Dimensions

- The component mark is only valid if shutoff valves are installed between process connection and boiler studs. A drain valve is also required
- The functional test is made by lowering the water level in the standpipe

PS	A1	A2	L	Z <sub>IP54</sub>	Z <sub>IP65</sub>
32	135	165*	140	A+D+550	A+D+600
80	145	195*	160	A+D+550	A+D+600

\* A smaller A2-dimension may be possible in agreement with the technical office according to the D-dimension and the size of the process connection.  
\*) min. Z = 2W+525

Process connection	
Welding end	Socket welding
	



## Digital Documentation

