

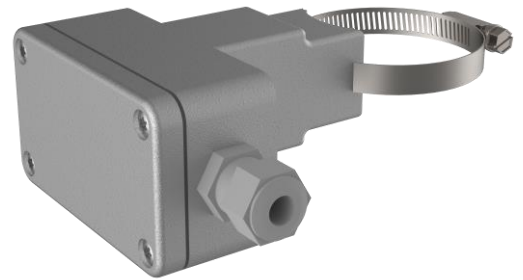
Magnetic locking switch

M510-1-60/76

Application and function

The magnetic locking switch is used for signalling, controlling and limiting on magnetic level gauges. It is attached to the housing tube of the magnetic level gauge via a threaded clamp without obstructing the view of the indicator strip. The position of the switch can be freely selected and changed by moving the switch on the housing tube. It is possible to retrofit a magnetic level gauge with magnetic blocking switches.

The magnet in the float, which rises or falls parallel to the water level in the housing tube, switches the magnetic lock switch and thus changes its switching position depending on the float position above or below the switch.



Magnetic locking switch M510

Technical basic equipment

- Protection type designed to IP65
- Can be used as a passive component in Ex i, Zone 1 in tested intrinsically safe circuits
- For pipe diameter 60.3 with one threaded clamp, for Ø76.1 with two threaded clamps

Technical data

Contact material	Silver palladium AgPd7030 solid hard gold plated AuCo 4-6µm		
Switching voltage U	≤ 250Vac		
Switching current I	≤ 1A		
Min. contact load	1W		
Switching behaviour	bistable		
Connection cable	PTFE cable at operating temperature > 60°C		
Switching voltage	24 ≤ VAC ≤ 250	≤ 24 VDC	
Switching current	min. [I _{min}]	8 mA	8 mA
	max. [I _{max}]	2 A	1 A
Permissible medium temperature	-60°C < T _{amb} < +400°C *		

NOTICE

Material damage due to heat development

Increased heat development can lead to damage to the switch.

- Do not insulate the switches if the medium temperature exceeds 150 °C.

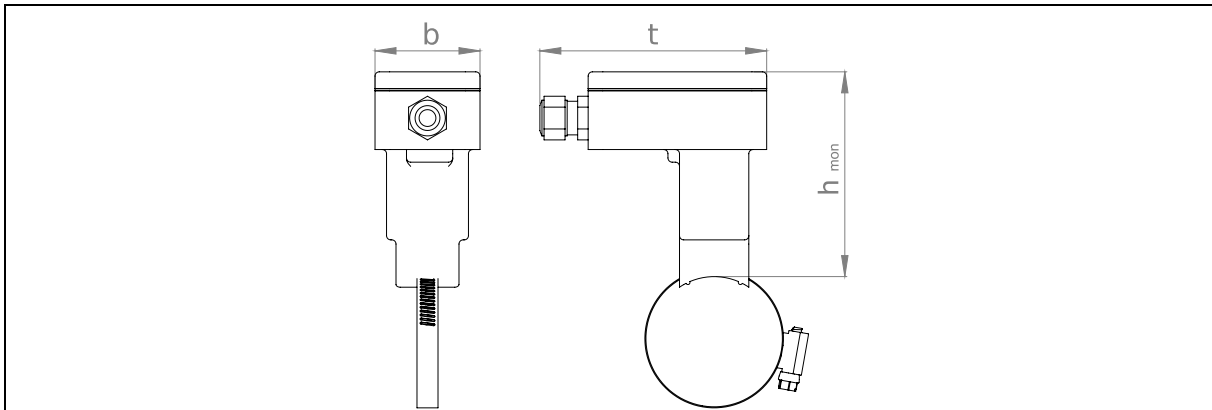
TIP

To extend the contact life of the magnetic lock switch, Igema GmbH recommends using commercially available RC combinations or a suitable varistor (e.g. 0.1 µF/100 Ω) when using inductive loads.

Available dimensions

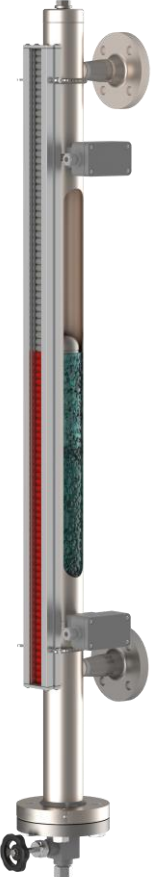
Description	Size	Article-No.
Magnetic locking switch M510-1-	60	15-03037
	76	15-12578

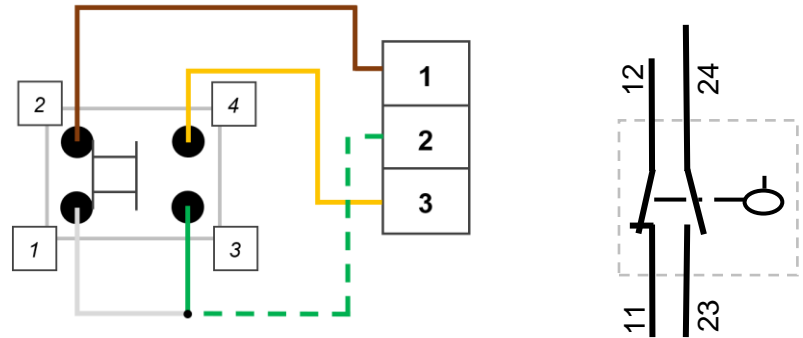
Dimensions and sizes



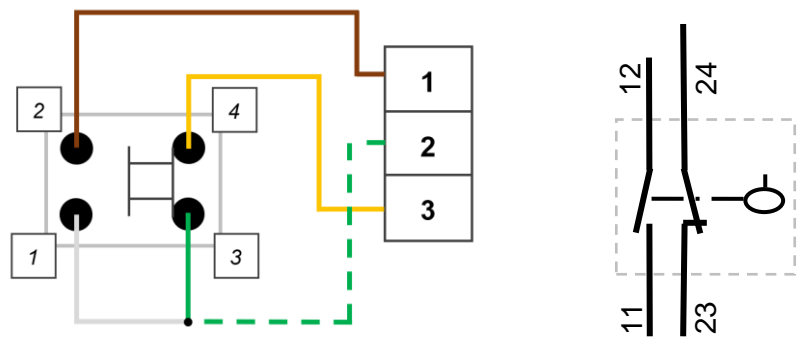
		[mm]	[inch]
Mounting height	[h_{mon}]	97,5	3 5/6
Total depth	[t_{ges}]	108	4 1/4
Width	[b]	50	2

Installation example and switch positions





Float above the switch



Float below the switch

Colour	Connection
Brown	A / 1
Yellow	B / 3
White	C / 2
Green	D / 2



Direct download



Product page on the Internet

Igema GmbH

Antwerpener Str. 1
48163 Muenster
Germany

www.igema.com

Telephone: +49 2501 924 24 0
Telefax: +49 2501 924 24 99
info@igema.com

