



## Reflex level gauge RG40

### Application and function

The reflex level gauge is a direct water level indicator without lighting device, which is mainly used on pressure vessels. Due to the special design of the reflective glass, a direct reading of the level is possible without further auxiliary devices.

This product is in accordance to EU-directive 2014/68/EU. Applied policy acc. to DIN EN 13445 and ASME Boiler and Pressure Vessel Code. Considered regulations AD2000. Furthermore, as a plant component for large water room boilers and water tube boilers, this product meets the requirements of the standards DIN EN 12952-7 and DIN EN 12953-6.

### Technical basic equipment

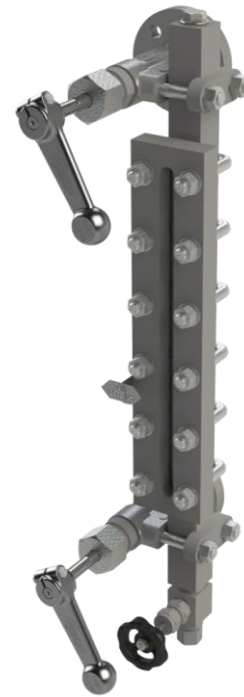
- Materials made of heat-resistant pressure vessel steel
- Freely selectable valve connection orientation
- Reflective sight glass made of borosilicate according to DIN 7081
- Vent plug BSP G $\frac{1}{2}$ "
- Shut-off valve A120-CS PN40 / DN20 or DN25
- Drain valve type AV250

### Available (optional) versions

- Stainless steel design
- Customised process connections
- Vent valve
- Other shut-off valves
- Other drain valves
- Inclined design

### Technical data

		RG40
Pressure stage		PN40 / Class300
Application limits with steam	Max. Operating pressure	32 bar
	Max. Temperature	+236 °C
Application limits for media without glass attack at maximum pressure	Max. Operating pressure	40 bar
	Max. Temperature	+50 °C
Application limits for media without glass attack at maximum temperature	Max. Operating pressure	28 bar
	Max. Temperature	+280 °C
Shut-off valve		A120-CS
Drain valve		AV250



Reflexionsanzeiger RG40



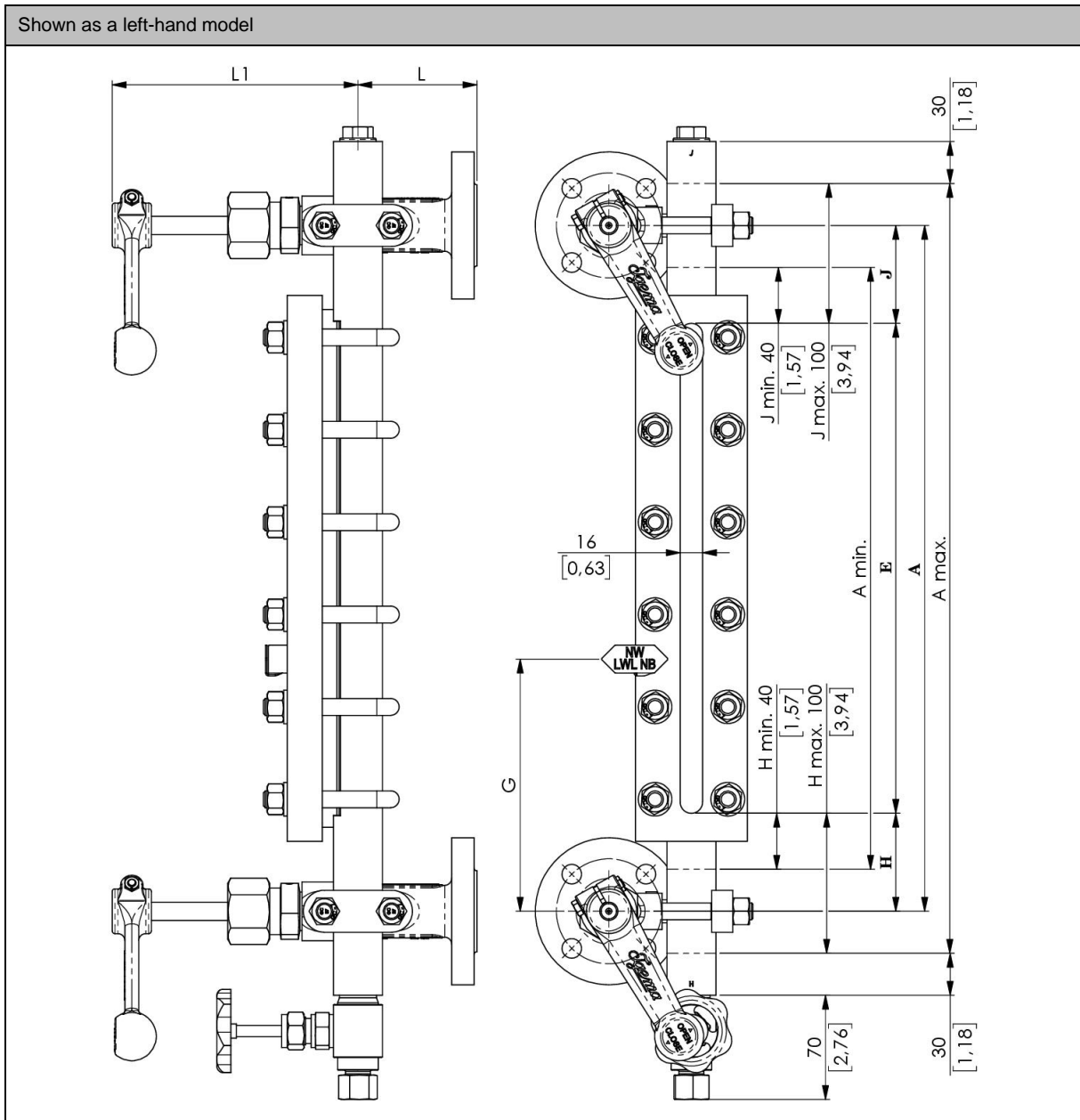
Reflex level gauge RG40 with flow-calming section

## Dimensions and tables

	Size	Visible-length E	Process connection dimension		H/J-Dimension min.	H/J-Dimension max.	Total length	Weight	Article-number
			A-min.	A-max.					
1	2	120	200	320	40	100	380	5,9 kg	15-17151
2	3	145	225	345	40	100	405	6,4 kg	15-17152
3	4	170	250	370	40	100	430	7,1 kg	15-17153
4	5	200	280	400	40	100	460	7,7 kg	15-17154
5	6	230	310	430	40	100	490	8,5 kg	15-17155
6	7	260	340	460	40	100	520	9 kg	15-17156
7	8	300	380	500	40	100	560	10 kg	15-17157
8	9	320	400	520	40	100	580	10,4 kg	15-17158
9	10	350	430	550	40	100	610	11,2 kg	15-17159

## Dimensions

Shown as a left-hand model



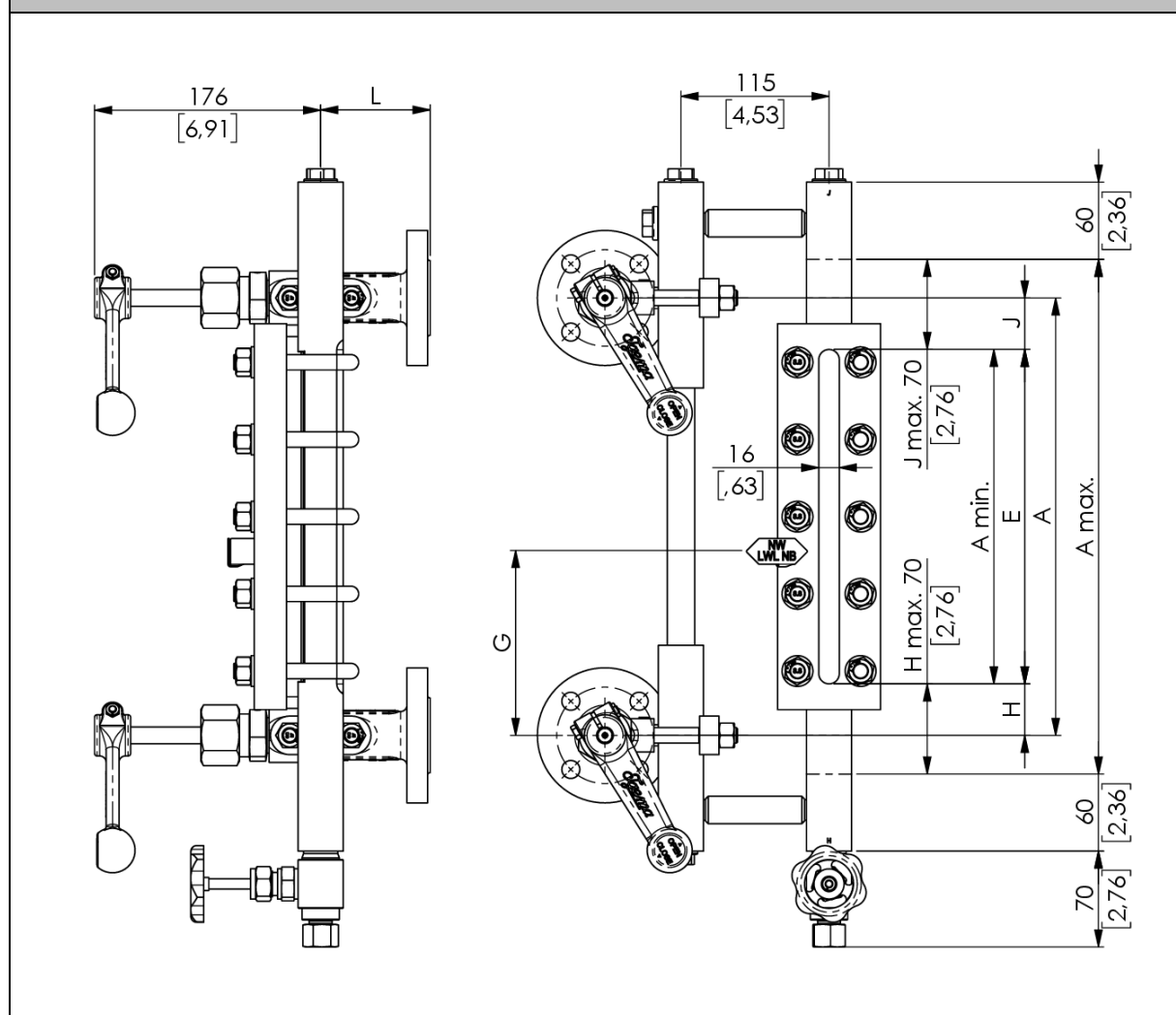
Dimension "L" depends on the process connection. For the standard shut-off valves A120-CS PN40, DN20 or DN25, dimension "L" is 85mm long.

## Dimensions and tables

	Size	Visible-length E	Process connection dimension		H/J-Dimension min.	H/J-Dimension max.	Total length
			A-min.	A-max.			
1	2	120	120	260	0	70	380
2	3	145	145	285	0	70	405
3	4	170	170	310	0	70	430
4	5	200	200	340	0	70	460
5	6	230	230	370	0	70	490
6	7	260	260	400	0	70	520
7	8	300	300	440	0	70	560
8	9	320	320	460	0	70	580
9	10	350	350	490	0	70	610

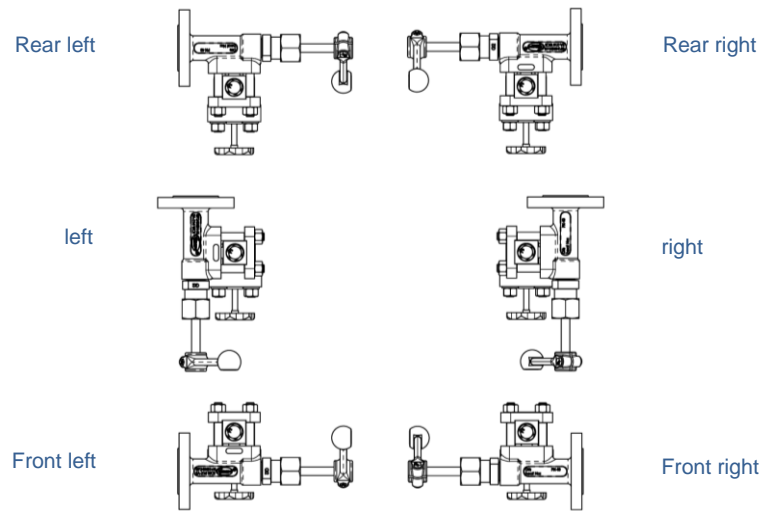
## Dimensions

Shown as a left-hand model



Dimension "L" depends on the process connection. For the standard shut-off valves A120-CS PN40, DN20 or DN25, dimension "L" is 85mm long.

## Possible vent connection



## Equipment

Illustrated Reflex Level Gauges are equipped with Shut-Off Valve A120-CS and Drain Valve AV250.



*Shut-off valve A120-CS*



*Drain valve AV250*

## Accessories

Designation	Marking	Article no..
Water level mark	NW-LWL-NB	25-13645
Water level mark	HHWL	25-13717
Water level mark	HWCO	25-13697
Water level mark	HWL	25-13716
Water level mark	NWL	25-13698
Water level mark	LWL	25-13718
Water level mark	LWCO	25-13699
Water level mark	LLWL	25-13719

For each water level mark, two semi-circular grooved pins are required for fastening. Article-No.: 40-11121



*Water level mark NW-LWL-NB*



**Note!**

**For level gauges weighing 30 kilograms or more, the customer must provide sufficient support (e.g. by spring hangers or similar).**

## Digital documentation

